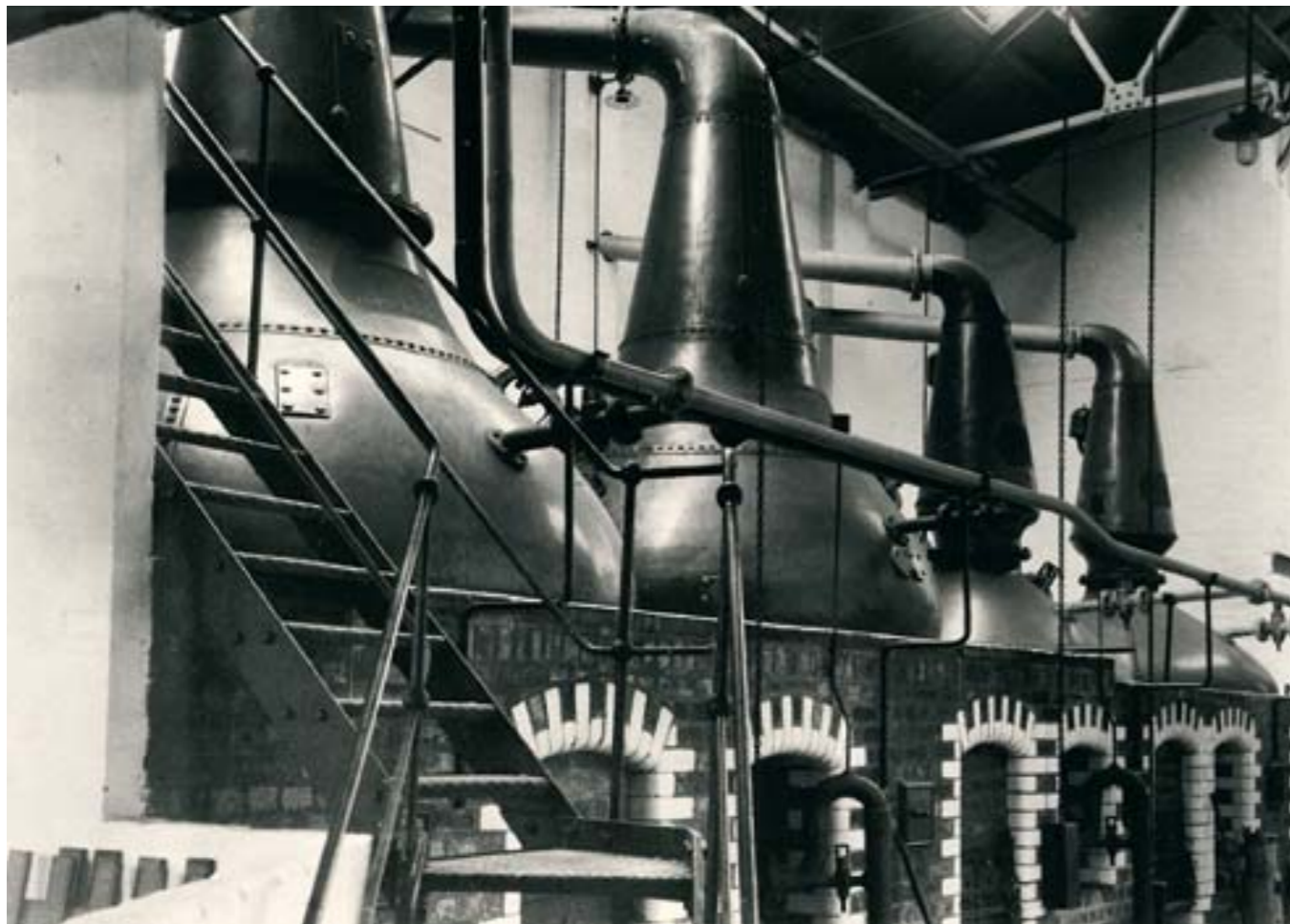


and 1929 the still house and mash house were extended, the tun room enlarged to contain six wash backs and two Morton refrigerators, used for cooling the wort. Doubling the still capacity was the most radical change. Laphroaig now had two wash stills and two spirit stills. The former two were equipped with the usual rummagers and all four of them were coal-fired. Later on in 1937 the original warehouse number 1 was raised to its present height of two storeys.

A small block of offices was built at the far end and housed employees as well as the Excise Officer. Peat and coal yards were located on the east side. Farming still

The four stills – note the ovens below.



Distillery seen from Laphroaig Bay, 1910-1915.



Cows on Laphroaig Farm, 1923.



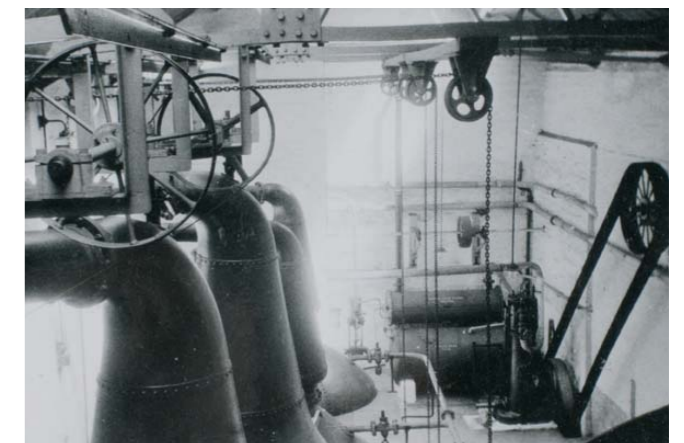
Laphroaig Distillery, 1923.



Laphroaig Distillery, 1924, as seen from Ardenistiel House.



Morton refrigerators.



Steam machine generating power to operate the rummagers.